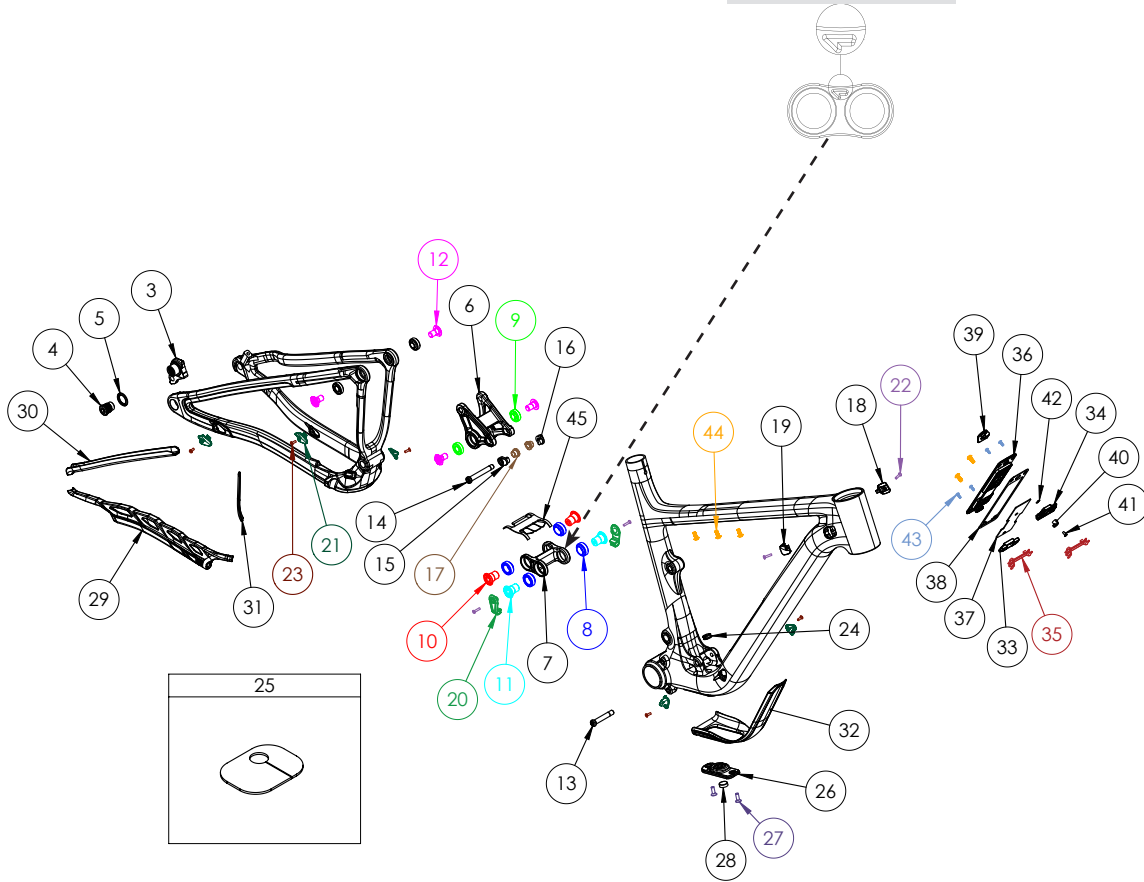


MACH 4 SL

ATTENTION: Lower links are marked with an arrow on the non-drive side. The link must be oriented where the arrow points to the front triangle.



HARDWARE				
NUMBER	PART NUMBER	DESCRIPTION	TORQUE	*
3	FP-UDH-TA-I2MM-BLK-V2-RI	UNIVERSAL REAR DERAILLEUR HANGER		
4	-	UNIVERSAL REAR DERAILLEUR HANGER BOLT	25 NM (18 LB-FT)	
5	-	UNIVERSAL REAR DERAILLEUR HANGER WASHER		
6	FP-LNK-UL-63MM-VI-RI	63MM UPPER LINK		
7	FP-LNK-LL-34MM-VI-RI	34MM OUT-TO-OUT LOWER LINK (3802 BEARINGS)		
8	FP-BRG-3802-LLUMAXEEN	24MM 3802 EXTENDED MAX BEARING - BLACK OXIDE		R
9	FP-BRG-6900-LLUMAXE	22MM 6900 EXT'D MAX-E BEARING - BLACK OXIDE		R
10	FP-BLT-MI4*20-VI-R2	M14X20 LINK BOLT FOR 3802 BEARING	35 NM (27 LB-FT)	L
11	FP-BLT-MI4*20-BLK-V6-RI	M14X20 LINK BOLT FOR 3802 BEARING - M3 INTERNAL THREAD	35 NM (27 LB-FT)	L
12	FP-BLT-M10*18-BLK-VI-R2	M10X18 LINK BOLT	19 NM (10 LB-FT)	L
13	FP-BLT-M8*45.7-BLK-V2	M8 FRONT SHOCK BOLT FOR 30.1MM SHOCK SPACING	13 NM (10 LB-FT)	G / L
14	FP-BLT-M8*57.3-BLK-VI-RI	M8 SHOCK BOLT FOR UPPER LINK FLIP CHIP	13 NM (10 LB-FT)	G / L
15	FP-NUT-UL-FLIPCHIP-DS-VI-RI	UPPER LINK FLIP CHIP (DS)		G
16	FP-NUT-UL-FLIPCHIP-NDS-VI-RI	UPPER LINK FLIP CHIP (NDS)		G
17	FP-SPC-UL-FLIPCHIP-VI-RI	UPPER LINK FLIP CHIP SPACER		G
18	FP-CLM-PORT-DOUBLE-VI-RI	DUAL PORT - DOUBLE CLAMP		
19	FP-CLM-PORT-SINGLE-VI-RI	DUAL PORT - SINGLE CLAMP		
20	FP-GDE-RCKR-VI-RI	ROCKER BOLT CABLE GUIDE		
21	FP-CLM-MECH-FRM-VI	INTERNAL ROUTING CABLE CLAMP		
22	FP-SCW-FLT-M3*15-BLK	DUAL PORT CLAMP SCREW BLACK		
23	FP-SCW-FLT-M3*10-BLK	CABLE PORT CLAMP SCREW BLACK		
24	FP-PLG-FLV-RL-VI-RI	FOX REMOTE LOCKOUT PLUG		
25	FP-GKT-FOX-REMOTE-VI-RI	FOX REMOTE SHOCK GASKET		
26	FP-MNT-TOOL-BLK-VI-RI	TOPEAK TOOL MOUNT		
27	FP-SCW-FLT-M5*15	M5X15 TOPEAK TOOL MOUNT SCREWS		
28	FP-MNT-TLPLG-BLK-VI-RI	TOPEAK TOOL MOUNT PLUG		
29	FP-PRO-4SLV3-CS-VI-RI	MACH 4 CARBON SL V3 CHAINSTAY PROTECTOR		
30	FP-PRO-4SLV3-SS-VI-RI	MACH 4 CARBON SL V3 SEATSTAY PROTECTOR		
31	FP-PRO-4SLV3-UR-VI-RI	MACH 4 CARBON SL V3 UPRIGHT PROTECTOR		
32	-	MACH 4 CARBON SL V4 DOWNTUBE PROTECTOR		
33	FP-SHD-HOOK-VI-RI	TOOL SHED - HOOK INSERT		
34	FP-SHD-CAM-INSRT-VI-RI	TOOL SHED - CAM INSERT		
35	FP-SHD-PLATE-NRRW-VI-RI	TOOL SHED - CABLE CLIP INSERT (NARROW)		
36	FP-SHD-DOOR-VI-RI	TOOL SHED - DOOR		
37	FP-SHD-PAD-VI-RI	TOOL SHED - RUBBER TOOL PAD		
38	FP-SHD-GKT-VI-RI	TOOL SHED - RUBBER GASKET		
39	FP-SHD-LEVER-VI	TOOL SHED - LEVER		
40	FP-SHD-CAM-VI-RI	TOOL SHED - CAM		
41	FP-SCW-FLT-M3*8-VI-RI	TOOL SHED - M3 LEVER ASSEMBLY SCREW		
42	FP-SHD-WSH-WAVE-VI-RI	TOOL SHED - LEVER ASSEMBLY WAVE WASHER		
43	FP-SCW-BTN-ST-M3*8-VI-RI	TOOL SHED - M3 INSTALLATION SCREWS		
44	FP-BLT-BTN-M5*12-VI-RI-BLK	M5X0.8X12 WATER BOTTLE BOLTS		
45	FP-PRO-34MM-LL-V2-RI	34MM LOWER LINK PROTECTOR		

AXLES	PART NUMBER	DESCRIPTION	TORQUE	*
-	I48MM THROUGH AXLE V4	I48MM UDH REAR AXLE	15 NM (11 LB-FT)	G
-		I2MM AXLE WASHER (INCLUDED W/ AXLE)		

BIKE CARE				
*	PRODUCT TYPE	RECOMMENDED PRODUCT		
G	GREASE	MOTOREX BIKE GREASE 2000		
L	THREAD LOCKER**	LOCTITE THREAD LOCKER #243 (OR EQUIVALENT)		
G/L	GREASE (BOLT HEAD/SHAFT) / THREAD LOCKER (BOLT THREADS)	SEE ABOVE		
A	ANTI-SEIZE	MOTOREX COPPER PASTE		
Y	LIGHT DUTY THREAD LOCKER	LOCTITE THREAD LOCKER #222 (OR EQUIVALENT)		
R	RETAINING COMPOUND	LOCTITE RETAINING COMPOUND #638 (OR EQUIVALENT)		

**THREADLOCKER SHOULD ALWAYS BE APPLIED TO THE CORRESPONDING FEMALE THREADS FOR THE BOLT SPECIFIED

